

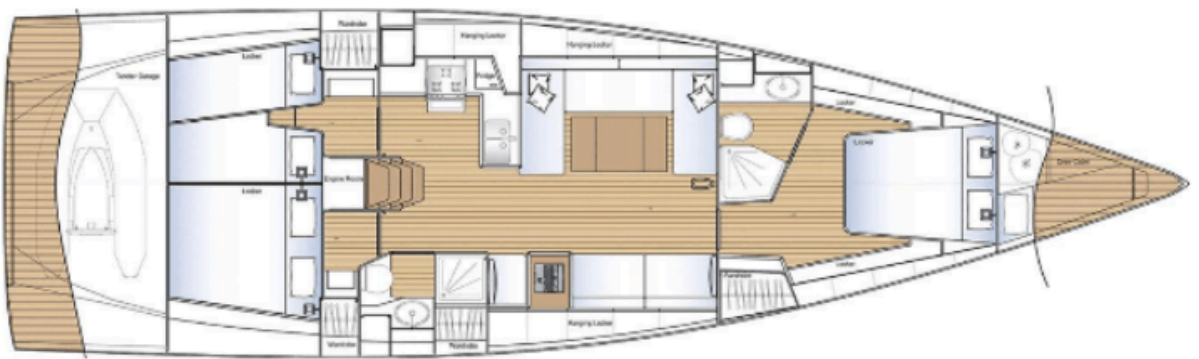


SOLARIS 50

Year: 2015
Price: 595.000 €
Location: IBIZA
Flag: French (VAT paid)

Boat in optimal condition with few hours of use and a very complete equipment for cruising and sports navigation. Its complete set of sails, optional and equipment make it an easy boat to navigate and with all the comforts that a boat of this length need.

All the equipment in operation and overhauled make the boat ready to be sailing.
The Solaris 50 is one of the most successful boat in the Solaris shipyard.



General

Shipyard:	SOLARIS YACHTS
Designer:	Javier Soto Acebal
Hull Material:	Composite
Category:	A
Flag:	French
Year of Build:	2015
Cabins:	3
Toilets:	2

Dimension and Material

Length:	15,40 mt
Width:	4,55 mt
Draft:	2,85 mt
Displacement:	15.400 kg
Fresh Water:	460 lt
Fuel:	370 lt
Holding tanks:	YES
Engine:	VOLVO PENTA D2-75

Details to highlight

Bowthruster
Gasoil heating Webasto
Carbon Mast Hall Spars
Carbon Furler Boom
Separate beds in port aft cabin
Optimal condition and maintenance of the boat
Carbon Wheels

Description of Accomodation

1 shipowner cabin in the bow with central bed and large wardrobes bath and shower in separate spaces.
 2 aft cabins, one with a double bed and the other one with separate beds on two levels, with wide furniture
 1 full aft toilet and shower separated by bulkhead.
 Toilet with countertops in carbon finishes.
 Interior in bleached oak. Port side galley, equipped with gas cooker, one stainless double basin sink, large fridge with top loading and second stainless steel refrigerator with drawer opening (2 drawers), oven with 3 burners.
 Saloon with dinette on the port side, sofa on starboard with wide instrument and navigation area.

HULL AND DECK

Deck in teak with gray joints

Anchor windlass 1500 W

Inox stainless steel anchor

Anchor of 25kg with 75 meters of chain

Sprayhood with 3 windows with stowage area covered in composite

Covers for wheels, consoles and outdoor table

2 instrument carrier consoles in navigation station

Wheels in carbon

Stanchions with doors for lateral access on both sides

Aft garage with self-opening swim platform and ladder for access to deck and swimming

Great access to garage from the cockpit

Remote control for opening the stern gate

Teak table in cockpit with two folding wings and stowage chests

Shower in cockpit with cold and hot water

Led boom lighting

Stowage bags for the halyards on both sides

6 folding mooring cleats Inox

3 windows for side in hull

Bearing system for tender storage

Flush hatches SOLIMAR

Decorative lines of the hull in gray

INTERIOR COMFORT

Interior finishes in bleached oak

Oak bleached floor

Light fabric upholstery

Illumination: Led

Heating WEBASTO AIR TOP 5000 ST with air vents in the shipowner cabin, in saloon, aft cabin and one in each bathroom

Hot water: Thermo heater to 220V and exchanger with engine

Customized carpet in saloon

2 mobile chairs on the saloon table with fixing system

Folding table to reduce its size and facilitate entry to the sofa

Curtains on all windows and hatch darkening

Bathroom countertops finished in carbon

Electric WC Planus

GALLEY

Large L-shaped galley on port side

Kitchen worktop in similar Corian

Tilting oven with 3 burners

One stainless double basin sink with lids to expand the use space in the kitchen

Standard vertical opening fridge + stainless steel fridge with 2 front opening drawers

Folding extension on the side of the kitchen to extend the worktop

ENGINES - PROPULSION

Engine: VOLVO PENTA D2 75

Control: Mechanical handle

Transmission: Sail drive

Propeller: 3 adjustable shovels MAX PROP

Engine hours: 1080 h

Bow thruster: MAXPOWER retractable 24V

ELECTRICAL INSTALLATION

Electricity: system to 12v and 220v

Batteries: 4 x 115 Ah AGM service
1 x 75 Ah for engine

Battery charger: MASTERVOLT 12/80 Ah

Alternator: Yes

Shore power in cockpit

MAST and RIG

Mast: Carbon Hall Spars - 3 spreaders -

Boom: FURLERBOOM in carbon

Rigging: Rod

Bang: NAVTEC hydraulic

Furling: HARKEN TD below deck

Backstay: NAVTEC - 2 hydraulic pistons

Hydraulic control unit: NAVTEC

Led lighting in boom

Self-tacking: Rail HARKEN

2 halyard bags in cockpit

Halyards: Dyneema for Mainsail

Complete maneuver for Gennaker/Code 0

ELECTRONICS

Probe + Wind Runner: 3 displays RAYMARINE i70s

Plotter: RAYMARINE AXIOM 7 -touchscreen 7" in console

Autopilot: RAYMARINE P70 EV1-ACU400

VHF: RAYMARINE

AIS: RAYMARINE AIS 650 class B with own antenna GPS

HIFI: equipment FUSION MS-UP700

2 speakers in cockpit/ 2 speakers BOSE in saloon

Router Wifi 4G

Additional I70 display in master cabin

VELAS

Mainsail furling in boom - NORTH SAILS 3DI

JIB Self-tacking - NORTH SAILS 3DI

CODE 0 - NORTH SAILS 3DI

SAFETY

Safety equipment

Life jackets and Hoop of life

Moorings and fenders

OTHERS

Folding walkway in carbon painted white 2,2m

Remote control for stern platform





SAILING YACHTS IBÉRICA







